

also keeping it shaded through the year, with the deepest shadows falling as the sun moved south after the monsoon. Consequently the walls retained their damp, thus jeopardising the health of the building. The offsets had been similarly violated on the westside with trees planted in the lawn between the hospital road and the Main Building. These had to be got rid of not only for the sake of the garden but also as a part of our overall plan for conservation of the Main Building (of which more later), whose centenary would fall in

2014. We applied to the authorities for permission to remove the trees and were most relieved when we received consent. They were promptly cut. The open elevation that one sees now was step one of the conservation plan.



54. La charmeuse de serpents (The Snake Charmer) by Henri Rousseau – Musée d’Orsay (1907)



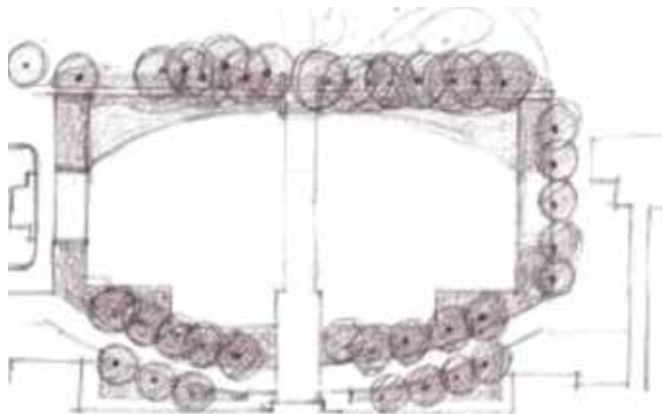
56. Aerial View of Oval Garden, Main Building and tennis courts (now South Garden)



57. Concept Drawing of proposed South Garden by Sandeep Khosla. Note the path crossing the existing north-south axis providing access to the art school



55. FRI Blueprint of Main Building and Tennis Courts possibly circa 1936



58. Concept Drawing by Adit Pal, adopted for execution. It retains a single north-south axis